



24 Aster Close, Didcot, OX11 6FR

£1,900 PCM - 10th July 2026.

- Newly constructed three-bedroom house
- En-suite to master bedroom
- Brand-new fully fitted kitchen with integrated appliances
- EPC B, Council Tax Band to be confirmed as new build.
- Air source heat pump

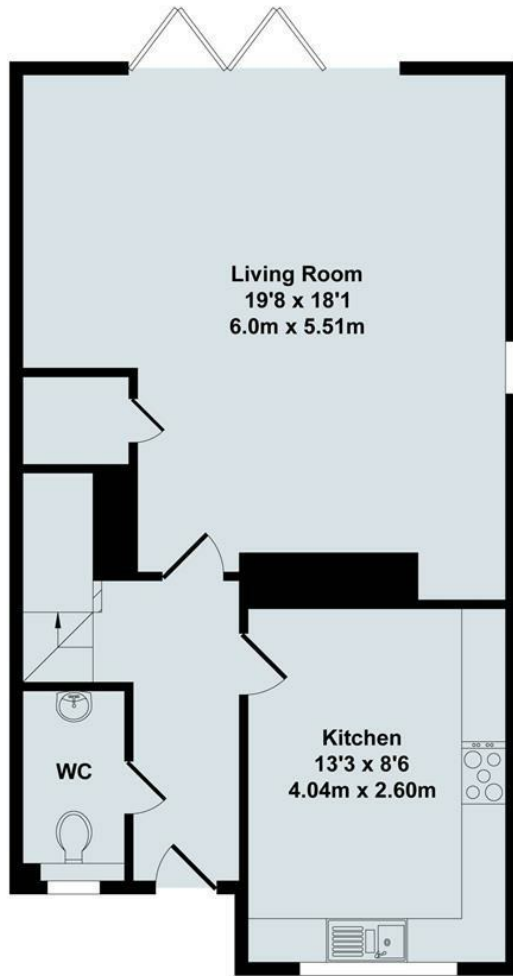
24 Aster Close, Didcot OX11 6FR

A newly constructed three-bedroom semi-detached house located on the popular Great Western Park development. The property features a brand-new fully fitted kitchen with integrated appliances, including a fridge/freezer, dishwasher, electric hob, microwave, and oven. There is also a separate utility room with an integrated washing machine and a downstairs cloakroom. The living room benefits from a decorative fireplace and bi-fold doors leading out to a generous enclosed garden, which includes a shed. Upstairs, there are three bedrooms, with an en-suite to master bedroom and built-in wardrobes in two of the bedrooms. The family bathroom is fitted with a shower over the bath. Air source heat pump. With parking. EPC B, Council Tax Band to be confirmed as new build.

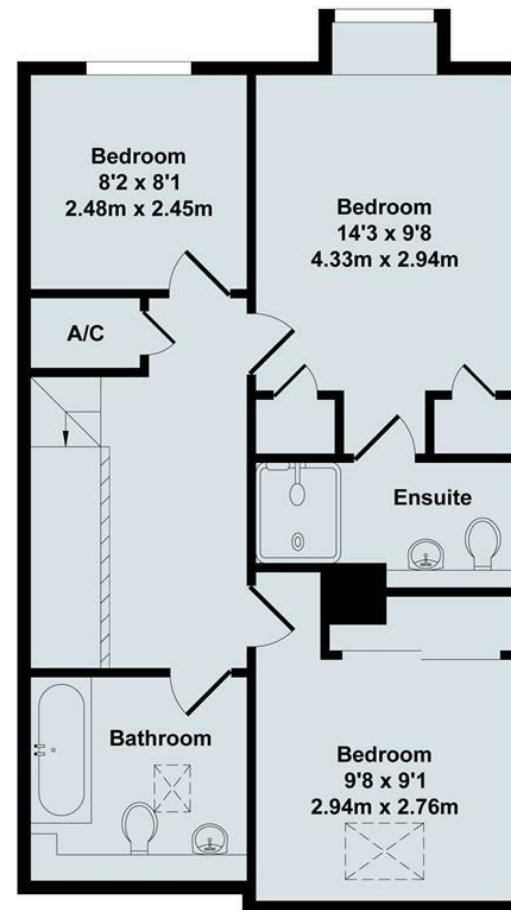


Council Tax Band:





Ground Floor



First Floor




Total Approx. Floor Area 1137 Sq.Ft. (105.60 Sq.M.)

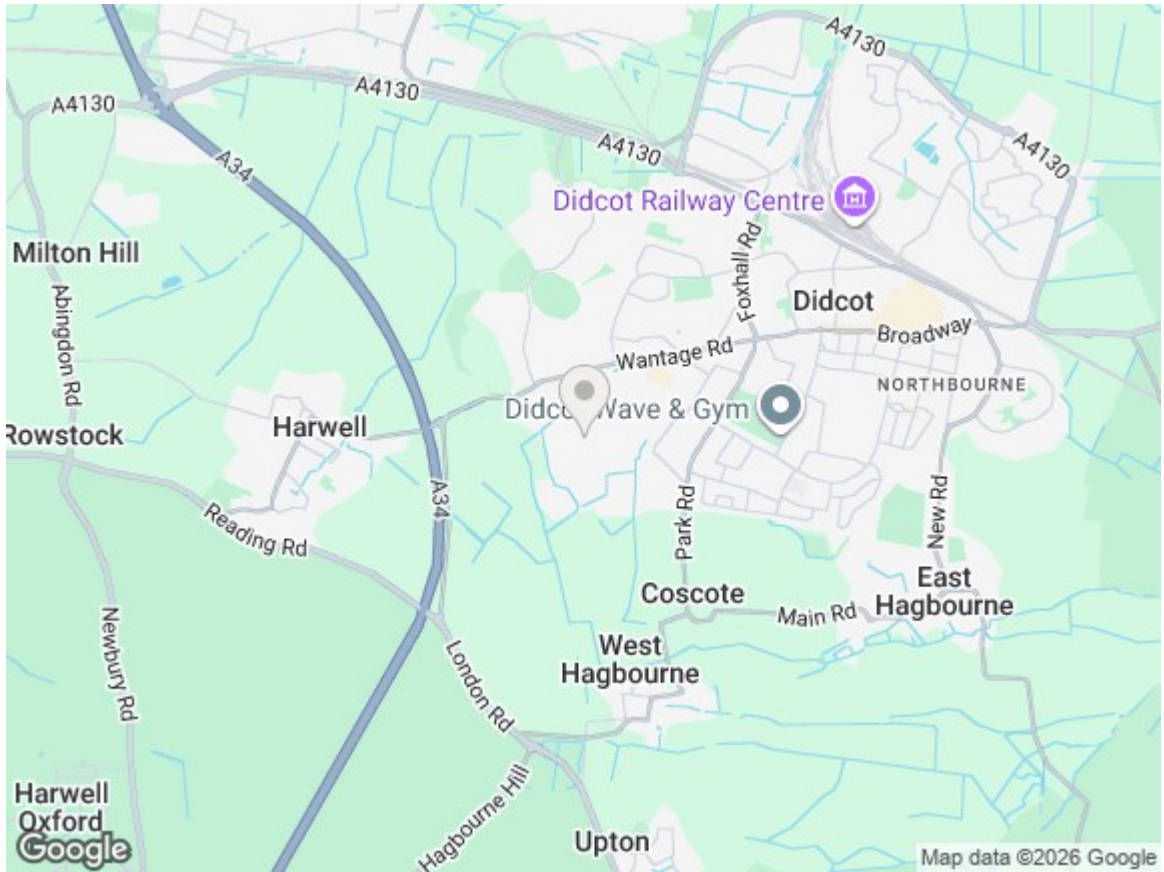
All items illustrated on this plan are included in the "Total Approx Floor Area"





Energy Efficiency Rating

	Current	Potential
Very energy efficient - lower running costs		
(92 plus) A		
(81-91) B		
(69-80) C		
(55-68) D		
(39-54) E		
(21-38) F		
(1-20) G		
Not energy efficient - higher running costs		
	82	89
England & Wales	EU Directive 2002/91/EC	



Directions

Viewings

Viewings by arrangement only. Call 01235 514267 to make an appointment.

Council Tax Band